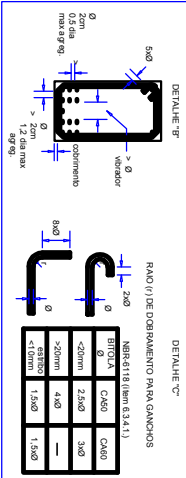
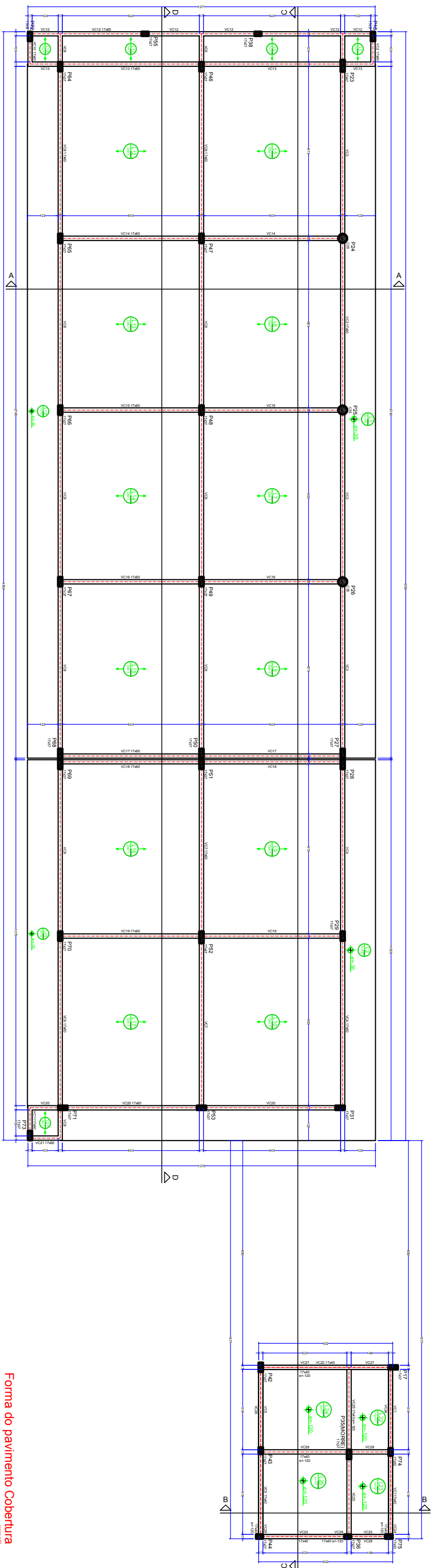


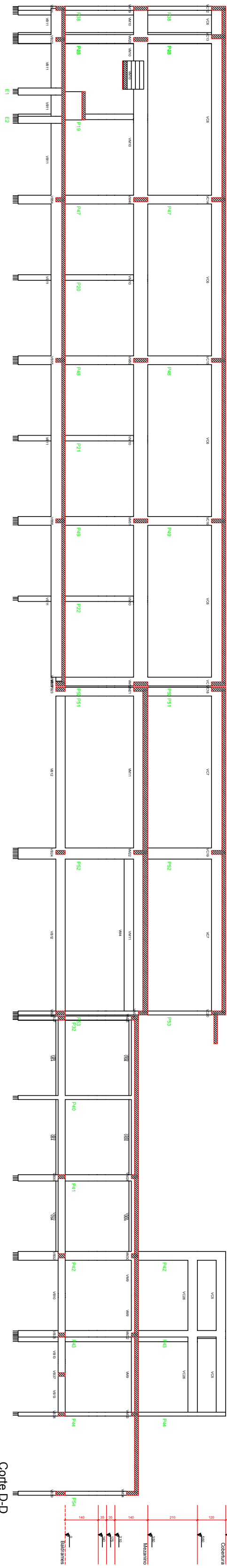
[illegible]

OBSERVAÇÕES:

FCK=200,0 Kg/cm² para fundação,
FCK=250,0 Kg/cm² para a estrutura.
Recobrimento de pilares = 2,5 cm.
Recobrimento de vigas = 2,5 cm.
Recobrimento de vigas bidirecionais = 2,5 cm.
Capacimento de laje pré-moldada = 5,0 cm. (Mínimo)
Slump 5 ± 1 cm.
Os furos de vigas bidirecionais deverão ser, aguçado
e posteriormente abridores, com socletes de 20,0 Kg/cm².



Forma do pavimento Cobertura






Corte D-D

[illegible]

Cariacou, St. Vincent and the Grenadines			
Type	Area (sq km)	Population	Area (sq km)
Marine	137	-	137
Terrestrial	37	30 560	30 560
Terrestrial	10	9 702 975	449 066

[illegible]

	Plata que mora
	Plata que passa
	Plata que nasce
	Plata com mudança de noção

